



# 2020 Porsche Centre Bournemouth J/24 World Championship

11th September to 19th September 2020

## Organising Authority:

Parkstone Yacht Club, United Kingdom J/24 Class Association  
and the International J/24 Class Association.

## Venue:

Parkstone Yacht Club, Pearce Avenue, Parkstone, Poole, Dorset, BH14 8EH, UK.

Regatta Website: [www.j24worlds2020.com](http://www.j24worlds2020.com)

## NOTICE OF RACE

### 1 RULES

- 1.1 The regatta will be governed by the rules as defined in the Racing Rules of Racing (RRS).
- 1.2 RYA National Authority prescriptions will apply as detailed in attachment A.
- 1.3 The Regatta Regulations of the International J/24 Class Association (IJCA) shall apply.
- 1.4 Support Vessels - RRS 41 shall apply from the time a boat leaves her mooring for the first race of each day and until she returns to her mooring after racing. If RC displays Race Signal AP over H, RRS 41 restrictions are suspended until she leaves her mooring again. This changes the preamble to Part 4 rules.
- 1.5 Bow numbers will be assigned to each boat and will be used as identification for the boat during the regatta. Bow numbers shall be applied by the organising authority and shall remain affixed until the end of the last day of the regatta.
- 1.6 In accordance with RRS G3, a boat chartered or loaned for this event may carry national letters or a sail number in contravention of the class rules.
- 1.7 If there is a conflict between languages, the English text will take precedence.
- 1.8 RRS Appendix T: Arbitration shall apply to this event, except as modified in NoR 10 below.



- 1.9 RRS 61.1(a) will be changed so that the red flag displayed by a protesting boat shall have a hoist of not less than 150mm and a fly of not less than 200mm.
- 1.10 RRS 60.4(a)(1) is changed to read: “....but not rules 41, 42, 44, 46, and 49.2 sentences 1 and 2, or....”
- 1.11 The notation [DP] in a rule in the SI means that the penalty for a breach of that rule may, at the discretion of the international jury, be less than disqualification. The notation [NP] in a rule in the SI means that a boat may not protest another boat for a breach of this rule. This changes RRS 60.1(a).
- 1.12 The International Jury may impose penalties less than disqualification (DPI), for violation of the class rules and racing rules other than those of Part 1 and Part 2. This changes RRS 64.1(a).
- 1.13 Class rule C.2.1(b) will be changed in the Sailing Instructions with class rule J.4.3 that allows limited crew substitution.
- 1.14 Class rule C.10.2 will be changed in the Sailing Instructions with class rule J.2 that allows a spare spinnaker with restrictions.

## 2 ADVERTISING:

- 2.1 Competitor advertising shall comply with RRS 80 and World Sailing Regulation 20.
- 2.2 Boats may be required to display advertising chosen and supplied by the organising authority.

## 3 ELIGIBILITY AND ENTRY:

- 3.1 The World Championship is open to J/24 Class boats as defined by the IJCA class rules, and that qualify as prescribed in the IJCA Regatta Regulations, and whose entries are accepted by the organising authority.
- 3.2 Championship drivers must be either nationals or residents and members of the National J/24 Class Association of the country that they represent, and they must have qualified as defined by their National J/24 Class Association to represent their country.
- 3.3 Entry will open on at 1200 hours (UK time) on Monday 24th February 2020.
- 3.4 Eligible boats may enter by completing the entry process by going to **[www.J24worlds2020.com](http://www.J24worlds2020.com)** select the **Regatta Information** page and then select the **Entry Process** link. The required fees, detailed in NoR 4.1, must be paid on entry. **Entry is not secured until the required fees are collected by the Organising Authority.**
- 3.5 Late entries after 2359 hours (UK time) on 30th June 2020 will be accepted up to 2359 hours (UK time) 5th September 2020 with an additional late entry fee, as shown in NoR 4.4, providing the maximum number of entries specified in NOR 3.6 has not been reached.
- 3.6 The following restrictions on the number of entries shall apply:  
**The maximum number of entries accepted by the Organising Authority will be 60 boats.** Order of acceptance shall be by boats completing the required form indicated in NoR 3.4 and the Organising Authority receiving the required fee indicated in NoR 4.1, and 4.4 as applicable.



#### 4 FEES:

- 4.1 The required entry fee is £850.00 (Eight Hundred and Fifty UK Pounds).
- 4.2 Fee includes inspection, launching, hauling, storage/mooring while at the regatta, racing, 5 T-shirts, scheduled social functions for all crews, and prizes.
- 4.3 Additional individual social function tickets or passes may be purchased at registration for an additional fee.
- 4.4 The late entry fee described in NoR 3.5 will be £145 (One Hundred and Forty Five UK Pounds).

#### 5 SCHEDULE:

Day	Date	Time	Event/Activity
Friday	11th September	0900 - 1800	Registration/Inspection/Crew Weigh-in
Saturday	12th September	0900 - 1800	Registration/Inspection/Crew Weigh-in
Sunday	13th September	0900 - 1800 1300 1800 1800	Registration/Inspection/Crew Weigh-in Practice Race Competitors' Briefing and Opening Ceremony All Boats Afloat
Monday	14th September	1000 - 1030 1300 After Racing	Crew Weigh-in* Warning for First Race of the Day Social Event
Tuesday	15th September	1000 - 1030 1300 After Racing	Crew Weigh-in* Warning for First Race of the Day Social Event
Wednesday	16th September	1000 - 1030 1300 After Racing	Crew Weigh-in* Warning for First Race of the Day Social Event
Thursday	17th September	1000 - 1030 1300 After Racing	Crew Weigh-in* Warning for First Race of the Day Social Event
Friday	18th September	1000 - 1030 1300 1600 1800	Crew Weigh-in* Warning for First Race of the Day No Warning after this time Prize Giving, Closing Ceremony and Championship Party
Saturday	19th September	From 0730	Haul out and depart

- 5.1 \*These scheduled crew weigh-ins are only for race committee approved replacements or crews specified in accordance with class rule J.4.3.
- 5.2 Ten races are scheduled over five consecutive days.
- 5.3 Two races are scheduled per day. One extra race per day may be sailed provided that the regatta does not become more than one race ahead of schedule and the change is made according to the



provisions of the Sailing Instructions. If the regatta is behind schedule, extra races to a maximum of four races may be sailed in a single day.

## **6 REGISTRATION AND INSPECTION:**

- 6.1 At registration each boat shall present:
  - 6.1.1 A valid, IJCA issued Measurement Certificate, including Part C: Inventory of Required and Optional Equipment. Only Equipment Inspection will be done at the regatta. Measurement for certification must be successfully completed prior to the regatta.
  - 6.1.2 Proof of current marine liability insurance coverage in the amount of £3,000,000 (Three Million UK Pounds).
  - 6.1.3 Proof of J/24 Class Association membership in the country they represent for the boat owner and the driver.
- 6.2 All competitors will be weighed during registration. Competitors must have a passport or other photo identification at weigh-in.
- 6.3 Equipment Inspection will be carried out on all boats in accordance with the class rules.
- 6.4 Boats will be subject to inspection at any time and for any class rules during the regatta.

## **7 SAILING INSTRUCTIONS:**

- 7.1 The Sailing Instructions will be available after 1800 (UK time) on 9th September 2020 on the 'Race Documents' page at [www.j24worlds2020.com](http://www.j24worlds2020.com) and will also be available at registration.

## **8 VENUE:**

- 8.1 Attachment B shows the location of Parkstone Yacht Club and the racing area.
- 8.2 The distance from the yacht club to the course area is approximately 4.5 nautical miles.

## **9 THE COURSES:**

- 9.1 The courses to be sailed will be windward/leeward with 4 or 5 legs.
- 9.2 The target time for each race is approximately 75 – 90 minutes.
- 9.3 An offset mark at the weather mark will be used. Exceptions will be described in the Sailing Instructions
- 9.4 A gate at the leeward mark will be used. Exceptions will be described in the Sailing Instructions.

## **10 PENALTY SYSTEM:**

- 10.1 Decisions of the International jury will be final as provided in RRS 70.5.
- 10.2 RRS Appendix T will apply. Penalties may be modified in the Sailing Instructions.
- 10.3 The first two sentences of rule 44.1 are changed to: "A boat may take a One-Turn Penalty when she may have broken one or more rules of Part 2 or rule 31 in an incident while *racing*. However,



when she may have broken one or more rules of Part 2 while in the *zone* around a *mark* other than a starting *mark*, her penalty shall be a Two-Turns Penalty.”

10.3.1 Except if the course is shortened to *finish* at the *windward mark*, penalties while in the *zone* of the *windward mark* or on the offset leg may be delayed and taken as soon as possible on the downwind leg. This changes RRS 44.2.

10.4 RRS Appendix P applies, as below.

10.4.1 Rule P1.1 is changed to read, “Only members of the Jury may serve as observers and act in accordance with rule P1.2.”

10.4.2 P1.2 is changed to read “An observer appointed under rule P1.1 who sees a boat breaking rule 42 may penalize her by, as soon as reasonably possible, making a sound signal, pointing a yellow flag at her and hailing her sail number or bow number, even if she is no longer racing. A boat so penalized shall not be penalized a second time under rule 42 for the same incident.”

10.4.3 Rule P2.1 is changed to read, “two-turns penalty” is changed to “one-turn penalty”.

10.4.4 Rule P2.2, P2.3 shall not apply.

## 11 SCORING:

11.1 Four races are required to be completed to constitute a championship.

11.2 When fewer than five races have been completed, a boat’s series score will be the total of her race scores.

11.3 When five or more races have been completed, a boat’s series score will be the total of her race scores, excluding her worst score.

## 12 SUPPORT VESSELS:

12.1 Support vessels shall register during scheduled registration, declaring to which boat or boats they are attached. They may be required to display an identification flag supplied by the organising authority and are required to follow instructions of the OA.

12.2 There will be no facilities for storing, launching or mooring of support boats at the regatta venue.

12.3 There will be no storage facilities on the haven pontoons for dock boxes or any other items. (Boat trailers will be stored on site to allow access to storage boxes.)

## 13 BERTHING:

13.1 Boats shall be kept in their assigned places or areas, as directed by the organising authority.

## 14 HAUL-OUT RESTRICTIONS:

14.1 [DP][NP] Boats shall be afloat by 1800 hours on 13th September 2020 and shall not be hauled out during the regatta except in accordance with the prior written permission and terms of the jury. This restriction applies to rudders.



14.2 Haul out will not be available on Friday 18th September.

## **15 DIVING EQUIPMENT, PLASTIC POOLS AND OTHER PROHIBITED ACTIONS:**

- 15.1 [DP] Underwater breathing apparatus and plastic pools or their equivalent shall not be used between the time the boat is afloat and the end of the regatta. The hull may be cleaned at any time by swimming or keelhauling using ropes, cloth or other equipment designed for that use.
- 15.2 [DP] Careening by any means for the purpose of cleaning or inspecting the hull is prohibited during the regatta.
- 15.3 [DP] Use of dehumidifiers or electric fans is prohibited at all times while boats are afloat.

## **16 RADIO COMMUNICATION:**

- 16.1 [DP] Except in an emergency, a boat shall not make voice or data transmissions and shall not receive voice or data communication that is not available to all boats. This shall apply from the time she leaves her mooring for the first race of the day until racing for the day is complete.
- 16.2 The race committee may choose to make VHF radio communications to the fleet on a channel to be announced in the sailing instructions. It is strongly encouraged that each boat has a VHF radio on board capable of receiving these communications. UK VHF Channel M1/37a will be the preferred option or Channel 80 (M2) will be the reserve.

## **17 PRIZES:**

- 17.1 Prizes will be awarded to at least the top 15% of boats entered.
- 17.2 The Dr. Turner Trophy will be awarded to the top youth entry comprised of a crew in which none are over the age of 25 years.
- 17.3 The Jaeger Trophy will be awarded for the top women's entry in which the entire crew is comprised of women.

## **18 DISCLAIMER OF LIABILITY:**

- 18.1 Competitors participate in the regatta entirely at their own risk. See RRS 4, Decision to Race. The organising authority will not accept any liability for material damage or personal injury or death sustained in conjunction with or prior to, during or after the regatta.
  - 18.1.1 All competitors will be required to sign a Competitor Liability Waiver form to be provided in the registration package.
  - 18.1.2 By participating in this event, each competitor agrees to release the regatta organisers from any and all liability associated with participation in this event to the fullest extent permitted by law.

## **19 INSURANCE:**

- 19.1 Each participating boat shall be insured with valid third-party insurance with a minimum coverage of £3,000,000 (Three Million UK Pounds) per incident or the equivalent.



## **20 MEDIA RIGHTS:**

- 20.1 Competitors give absolute right and permission to the IJCA, the UK J/24 Class Association, Parkstone Yacht Club and the event sponsors to use, publish, broadcast or otherwise distribute for promotional, advertising or any other purpose, any images and sound recorded during the event of persons and boats free of any charge.

## **21 PARKSTONE YACHT CLUB STANDARD RISK STATEMENT**

- 21.1 Rule 4 of the Racing Rules of Sailing states “The responsibility for a boat’s decision to participate in a race or to continue racing is hers alone.”
- 21.2 Sailing is by its nature an unpredictable sport and therefore involves an element of risk. By taking part in any event at PYC, each participant agrees and acknowledges that:
- a) They are aware of the inherent element of risk involved in the sport and accept responsibility for the exposure of themselves, their crew and their boat to such inherent risk whilst taking part in such events.
  - b) They are responsible for the safety of themselves, their crew their boat and their other property whether afloat or ashore.
  - c) They accept responsibility for any injury, loss or damage to the extent caused by their own actions or omissions.
  - d) They are responsible for ensuring that their boat is equipped and seaworthy so as to be able to face extreme weather; that there is a crew sufficient in number, experience and fitness to withstand such weather and that their safety equipment is properly maintained, stowed and in date and is familiar to the crew.
  - e) The provision of race management teams, patrol boats and other officials and volunteers by the organisers does not relieve them of their own responsibilities.
  - f) The provision of patrol boat cover is limited to such assistance as can be practically provided in the circumstances, particularly in extreme weather conditions. Further, in the event that any assistance is rendered to a competitor, no liability for any loss, damage or injury to the competitor, and/or the boat and its equipment is accepted either by the club or the crew of such patrol craft.
  - g) It is their responsibility to familiarise themselves with any risks, regulations and/or bye-laws specific to sailing or racing in Poole Harbour and Poole Bay including:
    - i) Tidal conditions in Poole Harbour, which are complex with areas of shallow water common as well as very fast tidal flows in parts of the harbour.
    - ii) The area is used by a wide variety of craft, including large commercial vessels restricted in their ability to manoeuvre, a chain ferry in the harbour entrance and, at times, high volumes of leisure boat traffic. The Convention on the International Regulations for Preventing Collisions at Sea (COLREG) 1972, applies to all these craft including racing yachts.
    - iii) The Yacht Racing Criteria issued by Poole Harbour Commissioners, <https://www.phc.co.uk/wp-content/uploads/2020/01/YACHT-RACING-CRITERIA-2018.pdf> which place requirements on all those involved in yacht racing in Poole.
  - h) Parkstone Yacht Club strongly recommends that all sailors wear personal buoyancy whilst on the water, as failure to do so significantly increases the risks inherent in sailing. Personal buoyancy should comply with RYA Prescription to RRS 40.



**FURTHER INFORMATION, PLEASE CONTACT THE FOLLOWING:**

General enquiries: [hello@j24worlds2020.com](mailto:hello@j24worlds2020.com)

Website for event specific information including entry applications: [www.j24worlds2020.com](http://www.j24worlds2020.com)

Regatta Chair: Bryan Drake - [BryanDrake1@Outlook.com](mailto:BryanDrake1@Outlook.com)

Regatta Secretary: Jenny Pipe - [jennypipe@ntlworld.com](mailto:jennypipe@ntlworld.com)

Administration: Sarah Hornby - [sailing@parkstoneyc.co.uk](mailto:sailing@parkstoneyc.co.uk)

Local information may be found on the Parkstone Yacht Club website at: [www.parkstoneyachtclub.com](http://www.parkstoneyachtclub.com)

Charter boats: See the event website: [www.j24worlds2020.com/charter-boats](http://www.j24worlds2020.com/charter-boats)

**SPONSORS AT TIME OF PUBLICATION OF THIS DOCUMENT:**

Porsche Centre Bournemouth	<a href="http://www.porschebournemouth.co.uk">http://www.porschebournemouth.co.uk</a>
Monex Europe	<a href="https://www.monexeurope.com">https://www.monexeurope.com</a>
APLAN	<a href="https://www.aplan.co.uk/alton-private-clients">https://www.aplan.co.uk/alton-private-clients</a>
Brimoncourt	<a href="http://brimoncourt.com/en">http://brimoncourt.com/en</a>
Investor Media	<a href="https://www.investor-media.com">https://www.investor-media.com</a>
North Sails	<a href="https://www.northsails.com/sailing/en/od/j24">https://www.northsails.com/sailing/en/od/j24</a>
Magic Marine	<a href="http://m.magicmarine.com">http://m.magicmarine.com</a>
Northshore Homes	<a href="http://www.northshorehomes.co.uk">http://www.northshorehomes.co.uk</a>
Brakeburn	<a href="https://www.brakeburn.com">https://www.brakeburn.com</a>



## ATTACHMENT A

### **3 ACCEPTANCE OF THE RULES**

Add new rule 3.6: 'Each competitor and boat owner shall ensure that their support persons comply with the rules.'

### **5 ANTI-DOPING**

The national authority procedural rules required by World Sailing regulation 21.16 to implement the World Anti-Doping Code through World Sailing Regulation 21 are the **RYA Anti-Doping Rules**, as published on the RYA website:

<https://www.rya.org.uk/racing/racing-rules/Documents/RYA%20AntiDoping%20Rules%202015.pdf>

### **67 DAMAGES**

Any issue of liability or claim for damages arising from an incident while a boat is bound by *The Racing Rules of Sailing* shall be subject to the jurisdiction of the courts and not considered by a protest committee.

A boat that takes a penalty or retires does not thereby admit liability for damages or that she has broken a rule.

### **86.3 RULE CHANGES**

An organising authority wishing to develop or test alternative rules shall obtain prior approval from the RYA. The Organising Authority shall promptly report the results of the test.

### **88.2 CHANGES TO NATIONAL AUTHORITY PRESCRIPTIONS**

Notices of Race and sailing instructions shall not change a prescription of the RYA. However, when an international jury has been appointed for an event, only the prescriptions to rules 3, 5, 67, 86.3 and 88.2 shall apply.

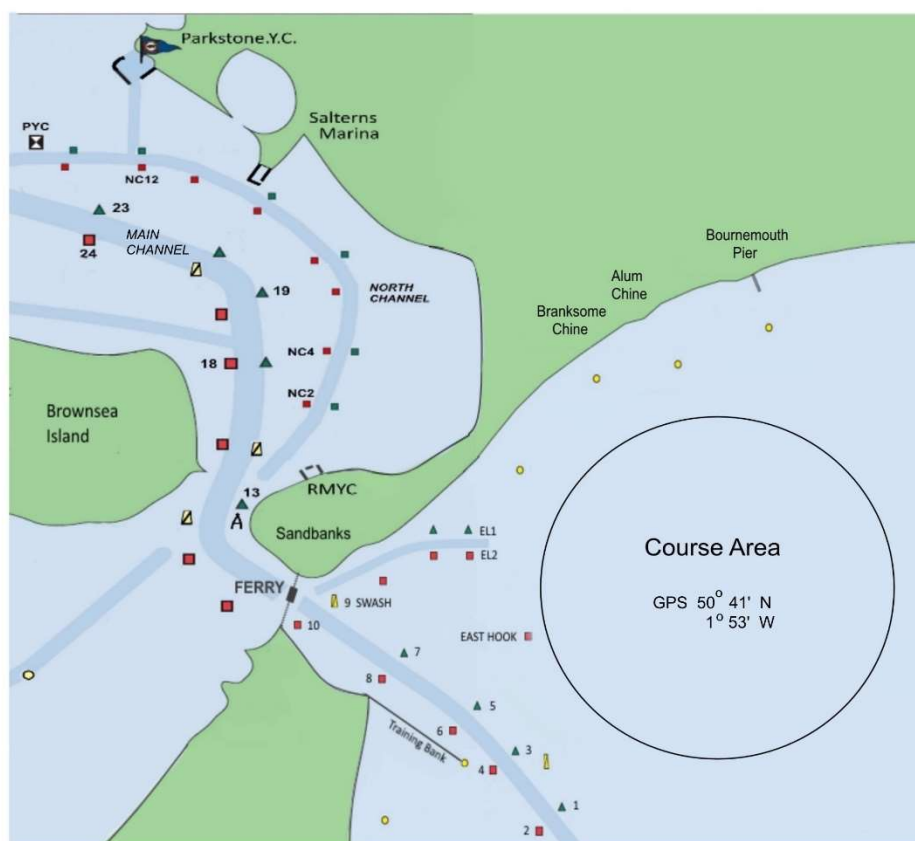


**Parkstone Yacht Club**  
*Bringing Sailing to Life*



## ATTACHMENT B

### LOCATION OF VENUE AND RACE AREA



## 2020 J/24 WORLD CHAMPIONSHIPS